

Product Information Bulletin

64 Outwater Lane, Garfield, NJ 07026 Ph: 973-340-7889 | Fax: 973-340-7809

UNIVERSAL FLAT POST DRIVER - UF001

The **Universal Flat Post Driver** is a heavy-duty, contractor-grade tool designed to make post installation faster, safer, and more efficient. Built from reinforced steel, it delivers maximum impact with minimal effort, ensuring consistent, straight placement for flat posts across a variety of applications, including **safety, construction, traffic control, and perimeter marking**.

Engineered for versatility, this driver works seamlessly with a wide range of flat posts and performs reliably even in **tough soil conditions**. Durable and long-lasting, the Universal Flat Post Driver is an essential tool for professionals seeking **efficient, dependable, and accurate post installation**.



DESCRIPTION:

Universal Flat Post Driver, measuring 44" x 1.5", this durable tool provides reliable performance on a variety of job sites, combining strength, precision, and long-lasting use.

Material: Steel

Size: 44" x 1.5"

INSTALLATION INSTRUCTION:

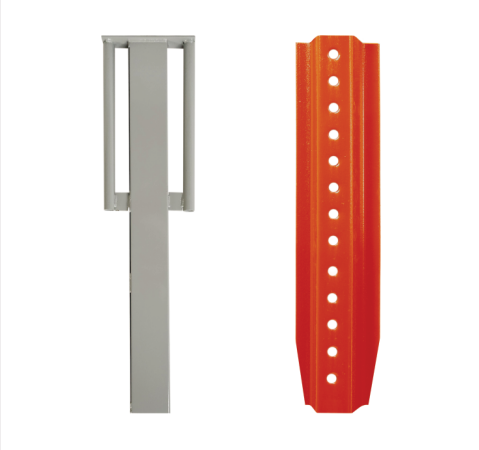
- 1. MOUNT THE DRIVER OVER YOUR POST**
- 2. POSITION THE POST**
- 3. DRIVING MOTION**
Grasp the handles on both sides and lift the driver
- 4. CHECK THE ALIGNMENT**
- 5. IMPACT TECHNIQUE**
Bring the driver down onto the top of the post
- 6. CHECK DEPTH**
Repeat the motion until the post reaches the depth
- 7. REMOVE THE DRIVER**

INSTRUCTIONS FOR UNIVERSAL FLAT POST DRIVER INSTALLATION

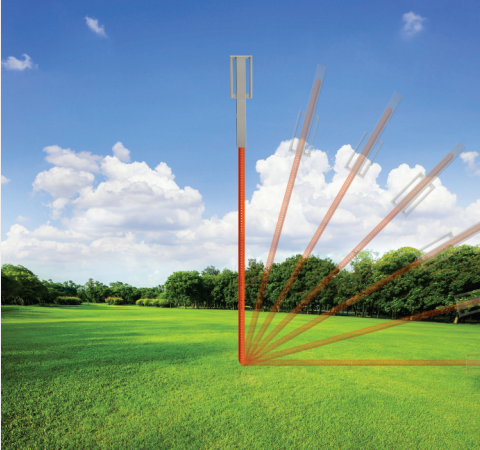
(ALWAYS CALL 811 BEFORE DIGGING)

REQUIRED TOOLS

Universal Flat Post Driver and U-Channel Post



1. MOUNT THE DRIVER OVER YOUR POST



2. POSITION THE POST



3. DRIVING MOTION

Grasp the handles on both sides and lift the driver



4. CHECK THE ALIGNMENT



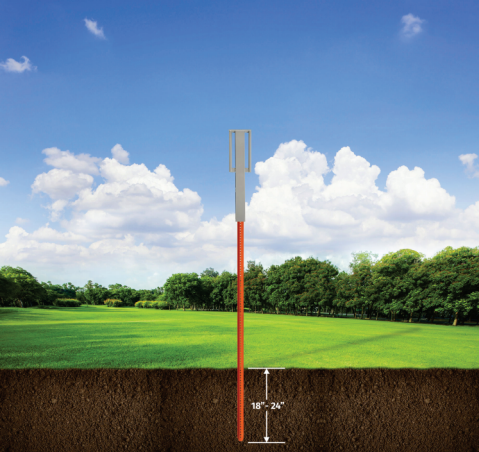
5. IMPACT TECHNIQUE

Bring the driver down onto the top of the post



6. CHECK DEPTH

Repeat the motion until the post reaches the depth



7. REMOVE THE DRIVER

